

# OPERABLE WINDOWS INDEX

## SECTION A – 1250 SERIES OPERABLE WINDOWS

PAGE–A1	–	1250	SERIES	INFORMATION
PAGE–A2	–	1250	SERIES	HARDWARE
PAGE–A3	–	1250	SERIES	DIMENSIONS
PAGE–A4	–	1250	SERIES	VENT
PAGE–A5	–	1250	SERIES	CASEMENT
PAGE–A6	–	1250	SERIES	IN 2000 CURTAIN WALL
PAGE–A7	–	1250	SERIES	IN 2500 CURTAIN WALL

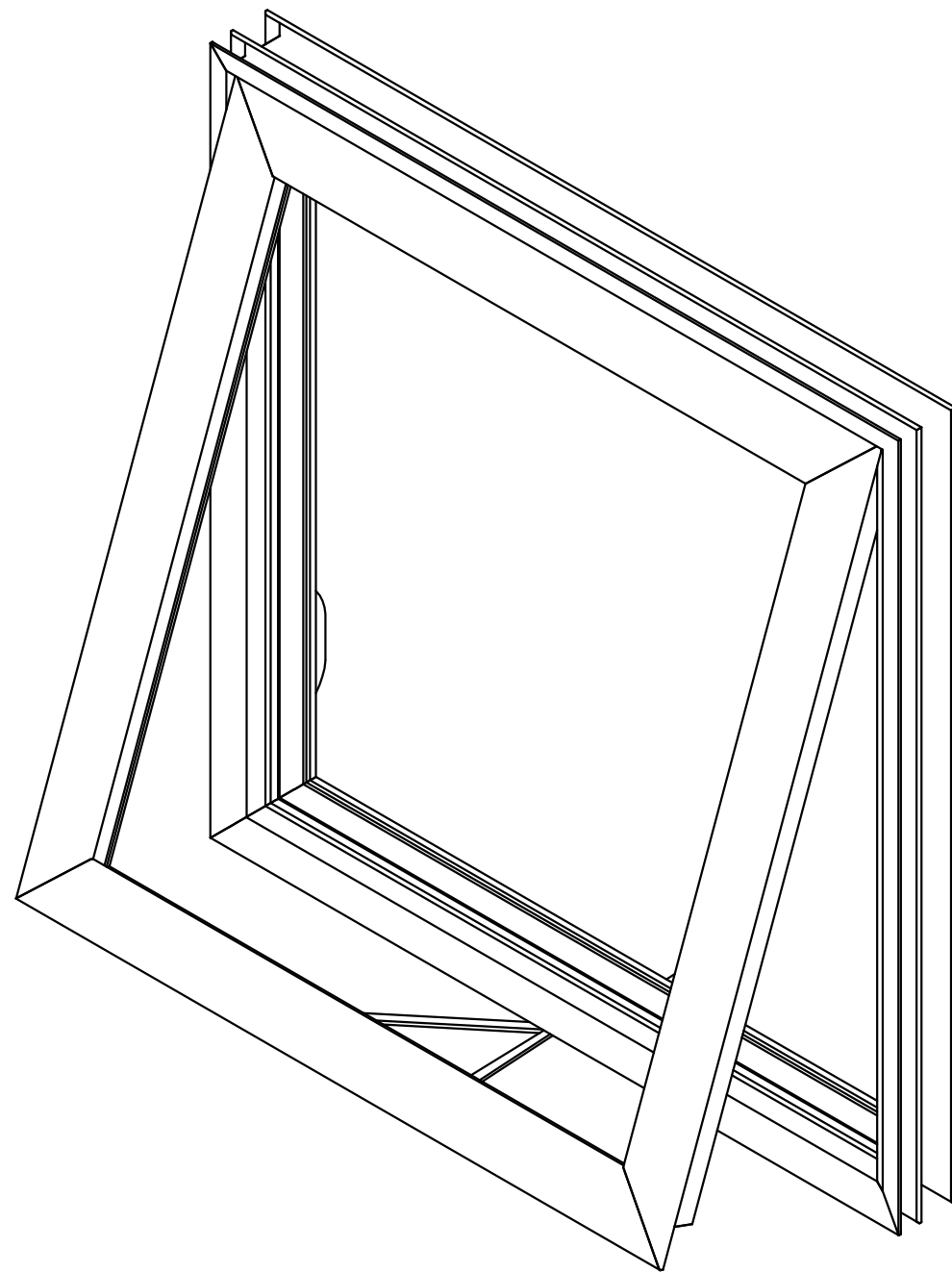


COMMERCIAL DESIGN  
SYSTEMS INC.

DATE: AUGUST 2014  
TEL: (905) 738-0188  
FAX: (905) 738-6132  
E-MAIL: CDS2009@BELLNET.CA

PAGE:

# 1250 SERIES OPERABLE WINDOWS INFORMATION



## DESCRIPTION:

THE 1250 SERIES IS A THERMALLY BROKEN OPERABLE WINDOW SYSTEM. THIS SERIES CAN BE AVAILABLE IN BOTH PROJECTED VENTS AND CASEMENTS

## FINISH:

### STOCKED:

CLEAR ANODIZED (#17)  
STANDARD BRONZE (#40)

### NON-STOCKED\*:

CLEAR ANODIZED (#14)  
LIGHT BRONZE (#26)  
BLACK ANODIZED (#29)

\*PAINT FINISHES ARE AVAILABLE UPON REQUEST

## FRAMING SYSTEM:

THE 1250 SERIES OPERABLE WINDOWS WORK IN ALL COMMERCIAL DESIGN SYSTEM'S CURTAIN WALL SERIES

## STOCK LENGTH:

IT IS A FABRICATED PRODUCT ONLY

## GLAZING:

1250 SERIES ACCEPTS 1"(25.4mm) SEALED UNIT GLASS



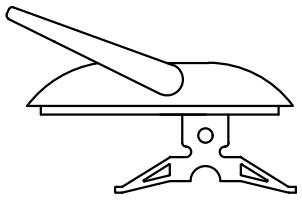
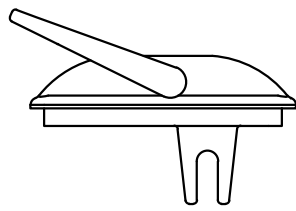
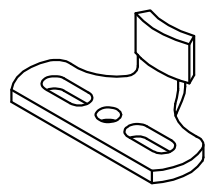
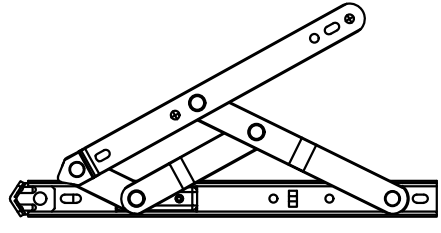
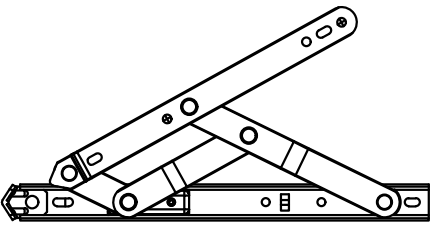
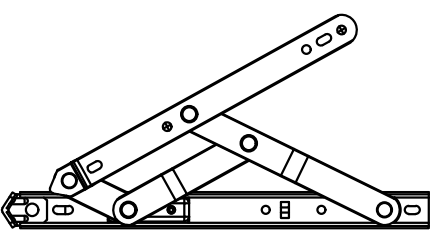
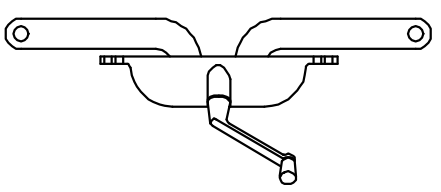
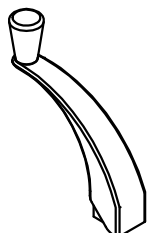
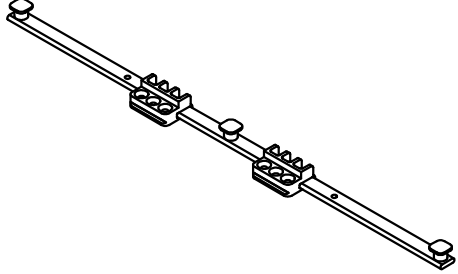
**COMMERCIAL DESIGN  
SYSTEMS INC.**

DATE: AUGUST 2014  
TEL: (905) 738-0188  
FAX: (905) 738-6132  
E-MAIL: CDS2009@BELLNET.CA

PAGE:

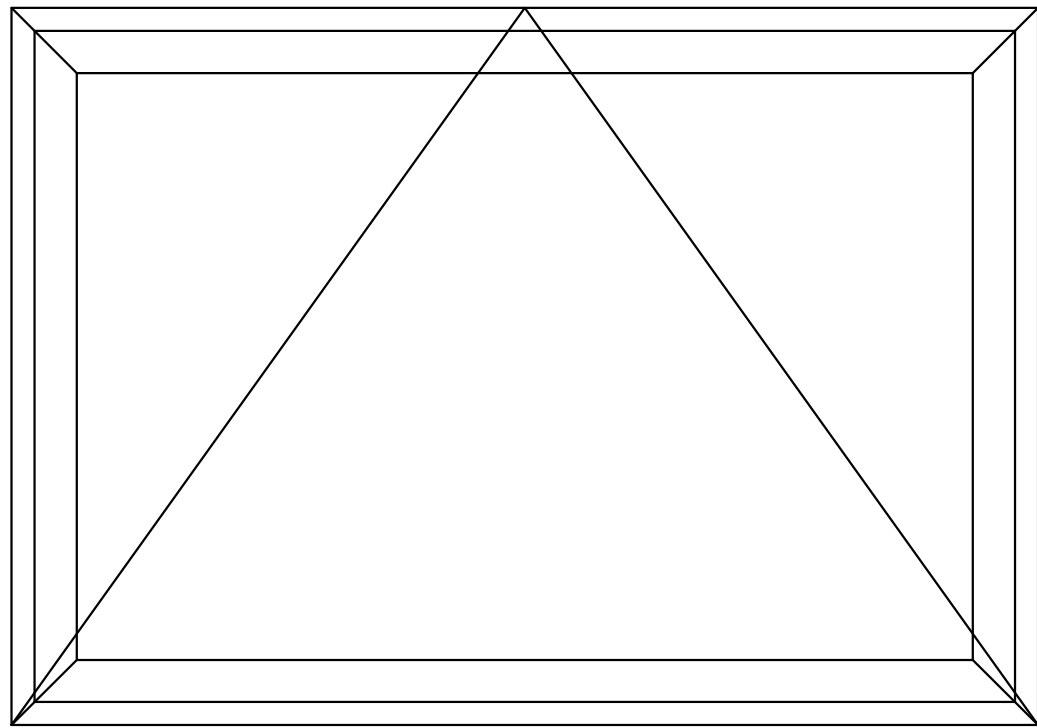
A1

# 1250 SERIES VENTS AND CASEMENTS

PART	PART NO	DESCRIPTION	FINISH
	H52503	SINGLE POINT LOCK HANDLES	MILL FINISH CLEAR ANNODIZED STANDARD BRONZE
	H52505	MULTI POINT LOCK HANDLES	MILL FINISH CLEAR ANNODIZED STANDARD BRONZE
	H52507	SINGLE POINT LOCK KEEPERS	MILL FINISH CLEAR ANNODIZED STANDARD BRONZE
	H52510	FOUR BARS FRICTION HINGES 10" PAIR	MILL FINISH
	H52512	FOUR BARS FRICTION HINGES 12" PAIR	MILL FINISH
	H52516	FOUR BARS FRICTION HINGES 16" PAIR	MILL FINISH
	H52525	VENT SCISSOR OPERATOR	MILL FINISH CLEAR ANNODIZED STANDARD BRONZE
	H52529	OPERATOR HANDLE	MILL FINISH CLEAR ANNODIZED STANDARD BRONZE
	H52530	MULTI POINT LOCKING TIE BAR	MILL FINISH

1250 SERIES  
VENTS AND CASEMENTS

VENTS  
PROJECT OUT



VENT SIZE:

MINIMUM WIDTH: 17  $\frac{3}{4}$ "

MAXIMUM WIDTH: 60"

MINIMUM HEIGHT: 17  $\frac{3}{4}$ "

MAXIMUM HEIGHT: 42"

STANDARD VENT HARDWARE:

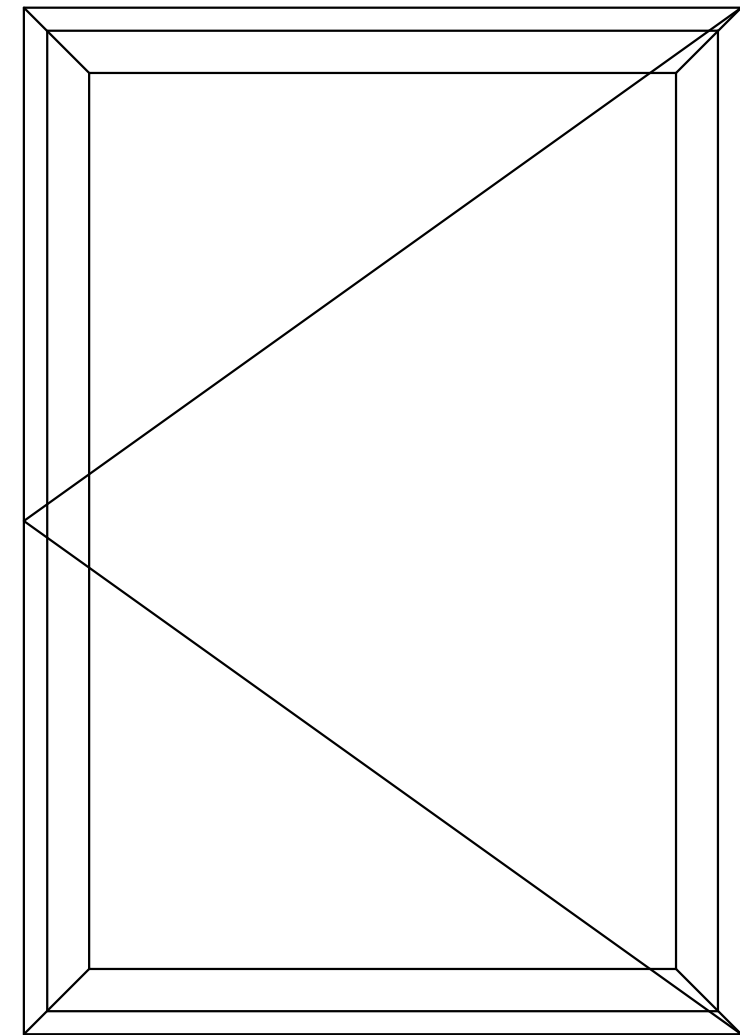
2 SINGLE POINT LOCK HANDLES

ROTO OPERATOR

INTERIOR GLAZING SPLINE

GLASS STOPS FOR 1" GLASS

CASEMENTS  
PROJECT OUT



CASEMENT SIZE:

MINIMUM WIDTH: 17  $\frac{3}{4}$ "

MAXIMUM WIDTH: 34"

MINIMUM HEIGHT: 17  $\frac{3}{4}$ "

MAXIMUM HEIGHT: 66"

STANDARD CASEMENT HARDWARE:

1 MULTI POINT LOCK HANDLE

ROTO OPERATOR

INTERIOR GLAZING SPLINE

GLASS STOPS FOR 1" GLASS



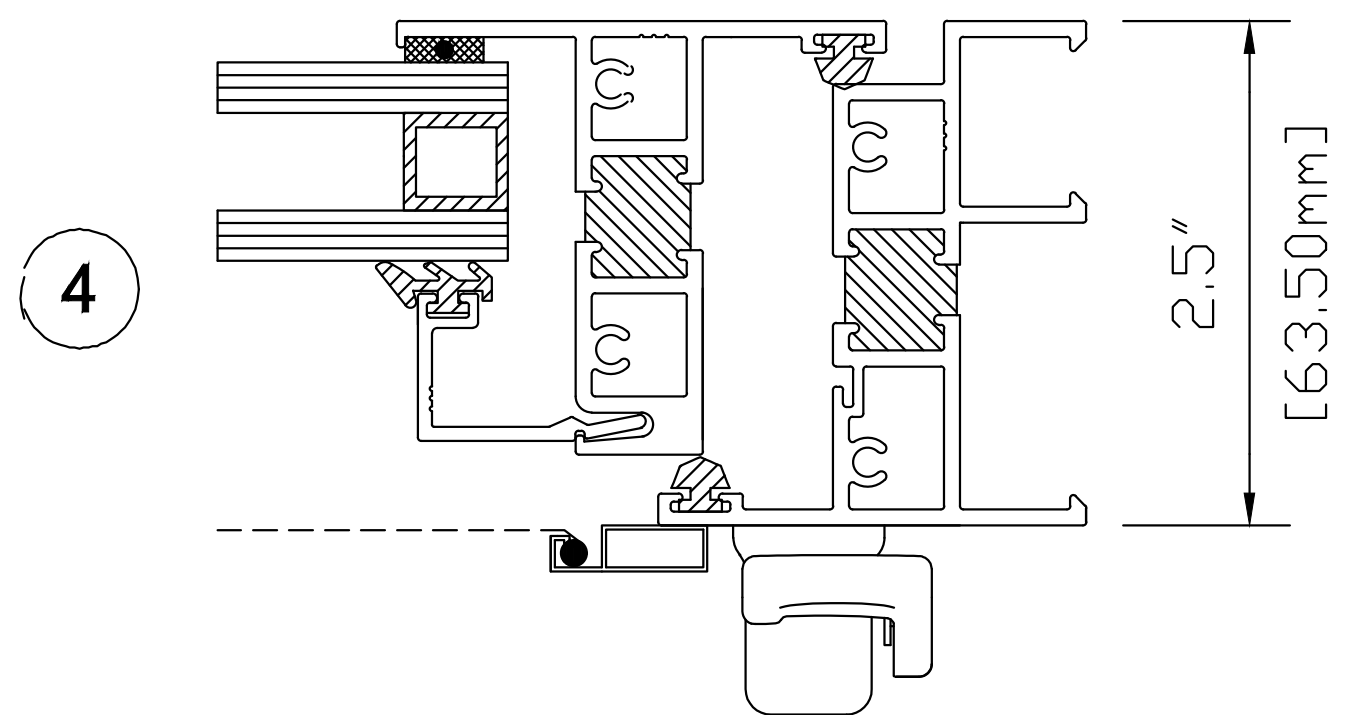
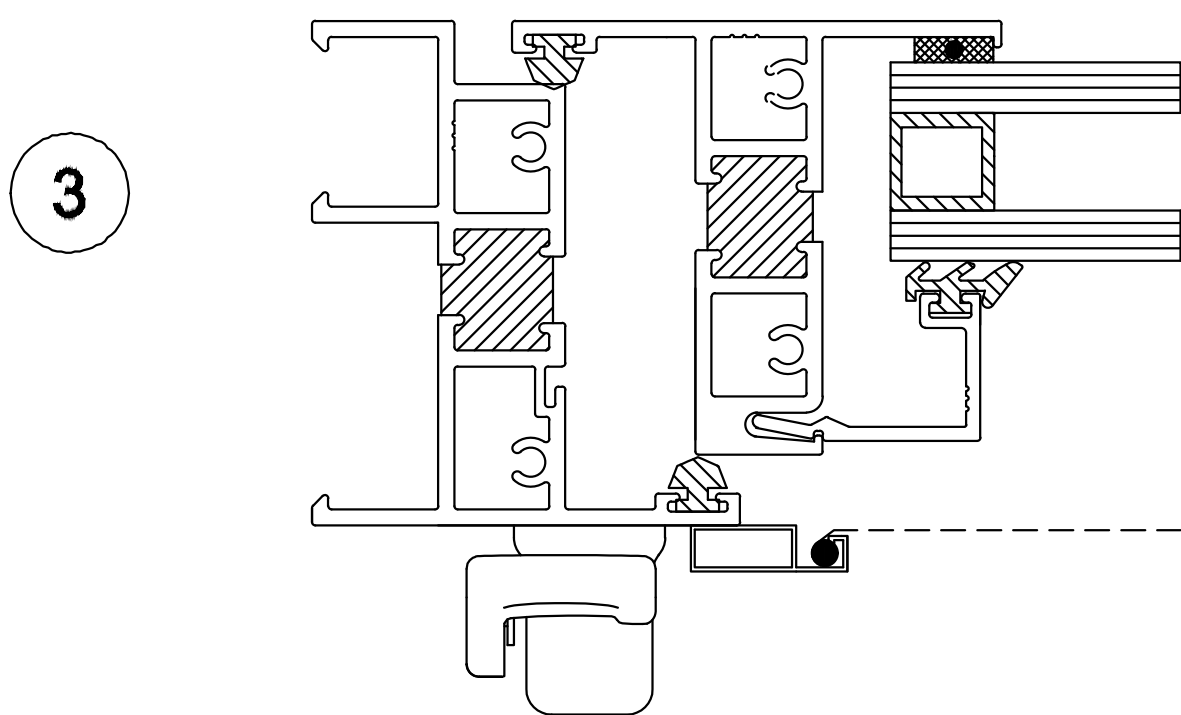
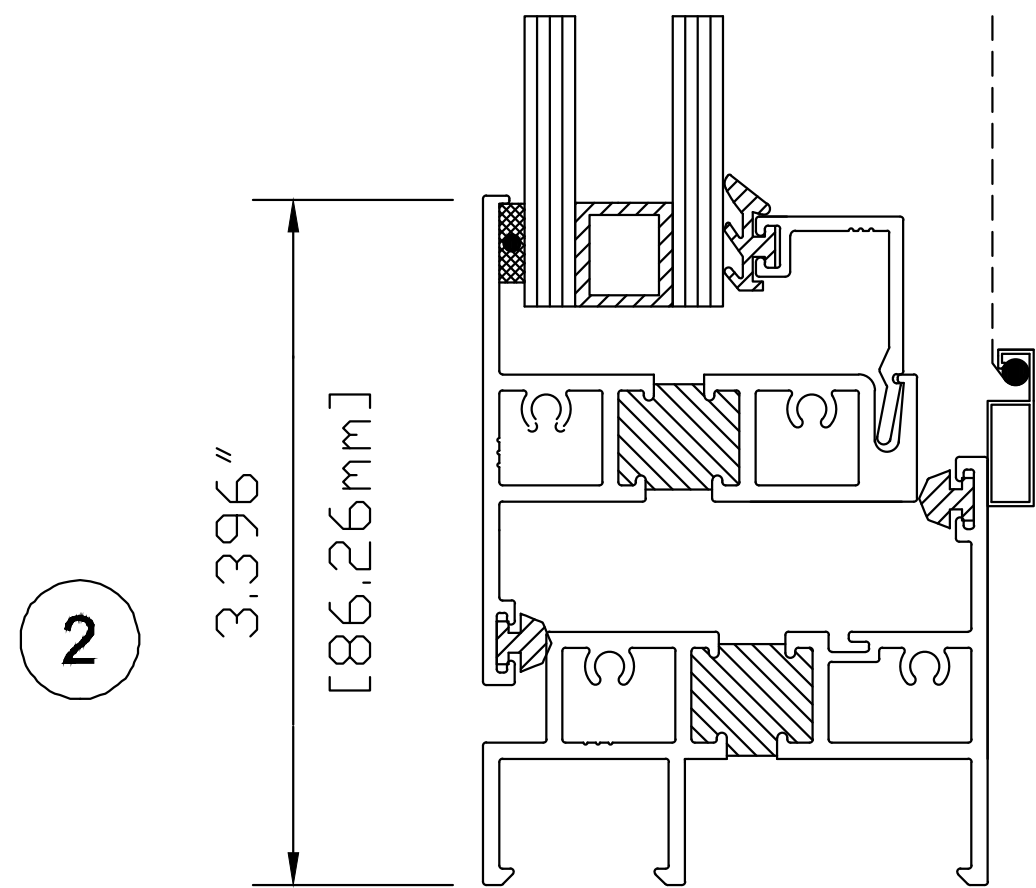
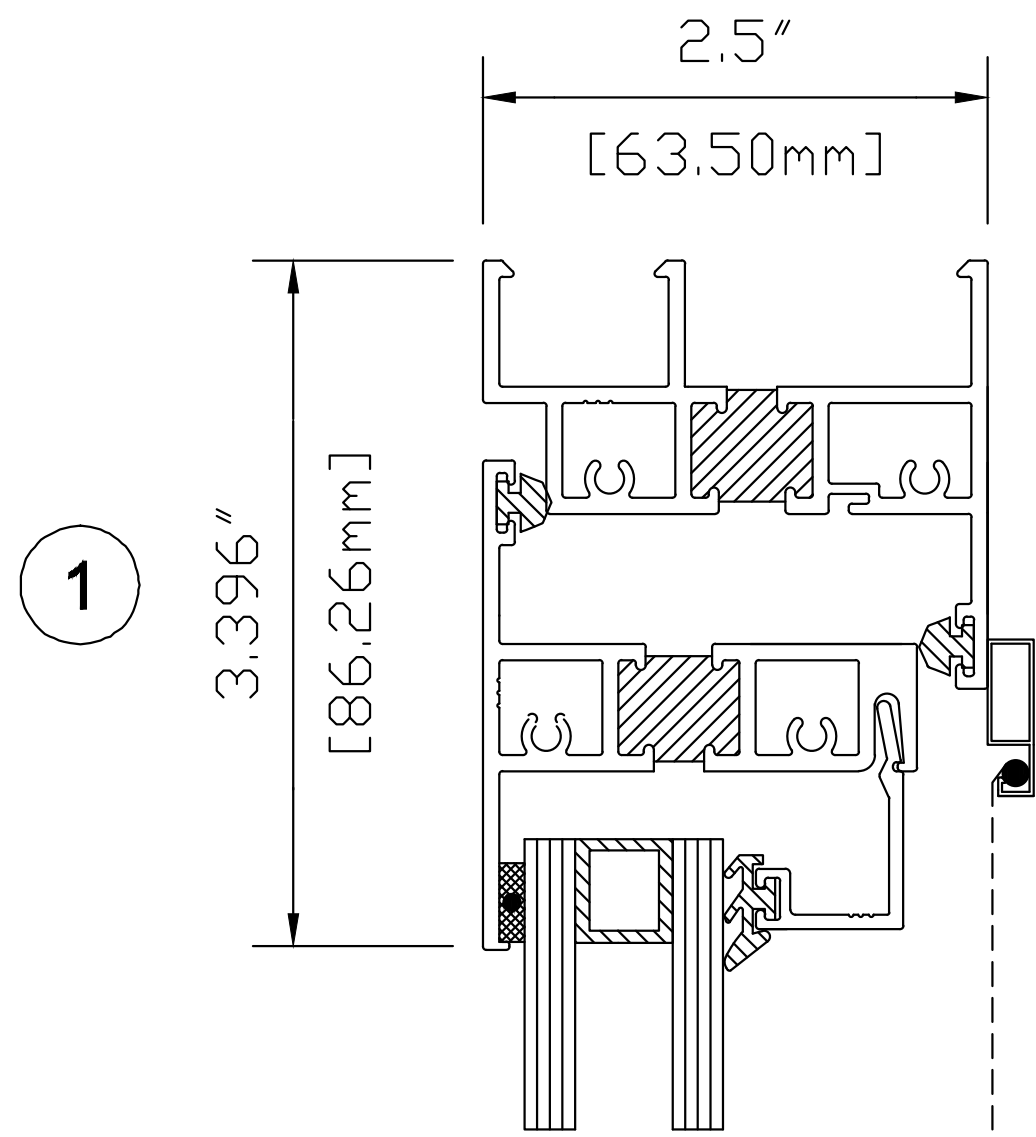
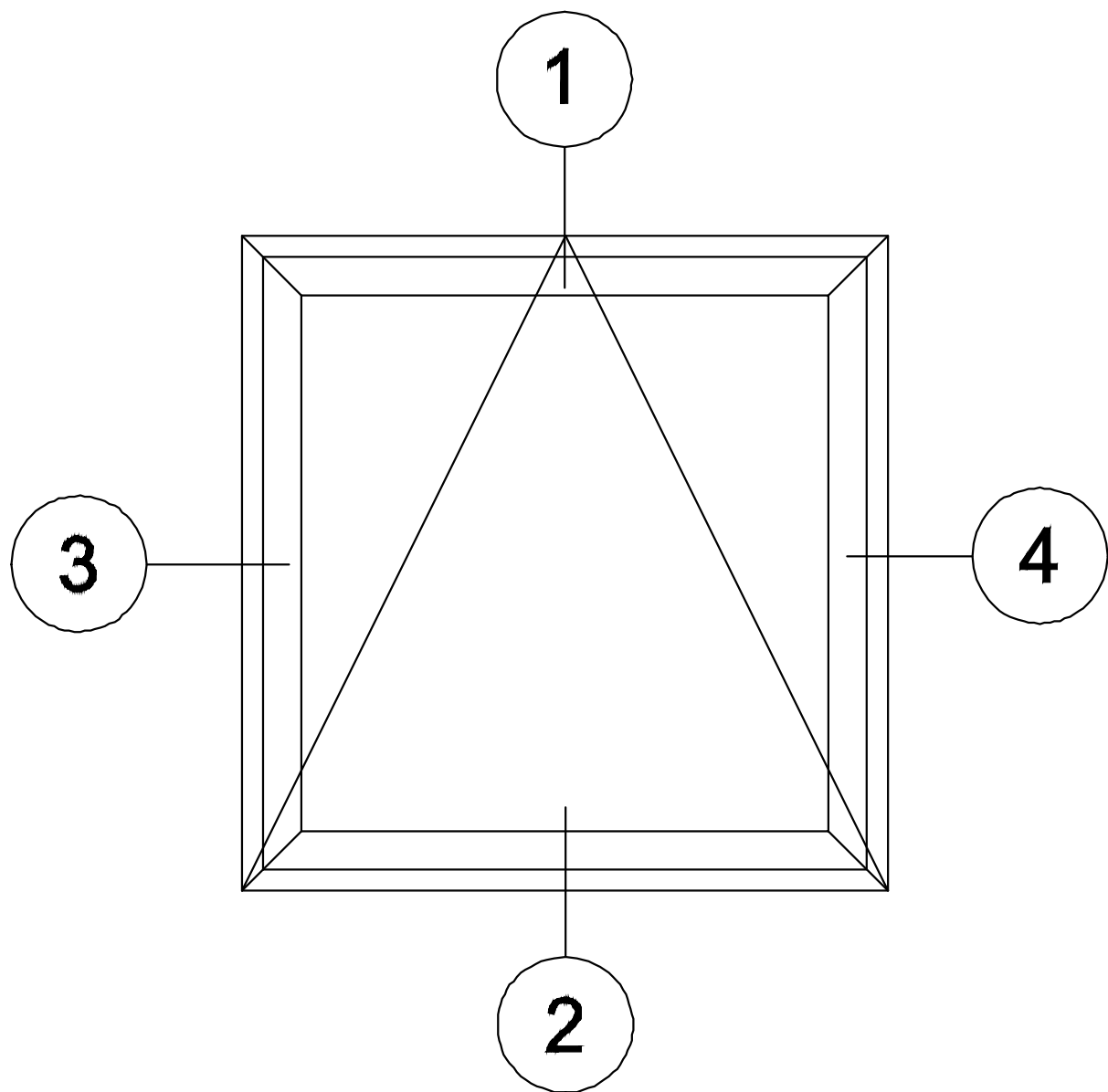
COMMERCIAL DESIGN  
SYSTEMS INC.

DATE: AUGUST 2014  
TEL: (905) 738-0188  
FAX: (905) 738-6132  
E-MAIL: CDS2009@BELLNET.CA

PAGE:

A3

# 1250 SERIES VENT PROJECT OUT



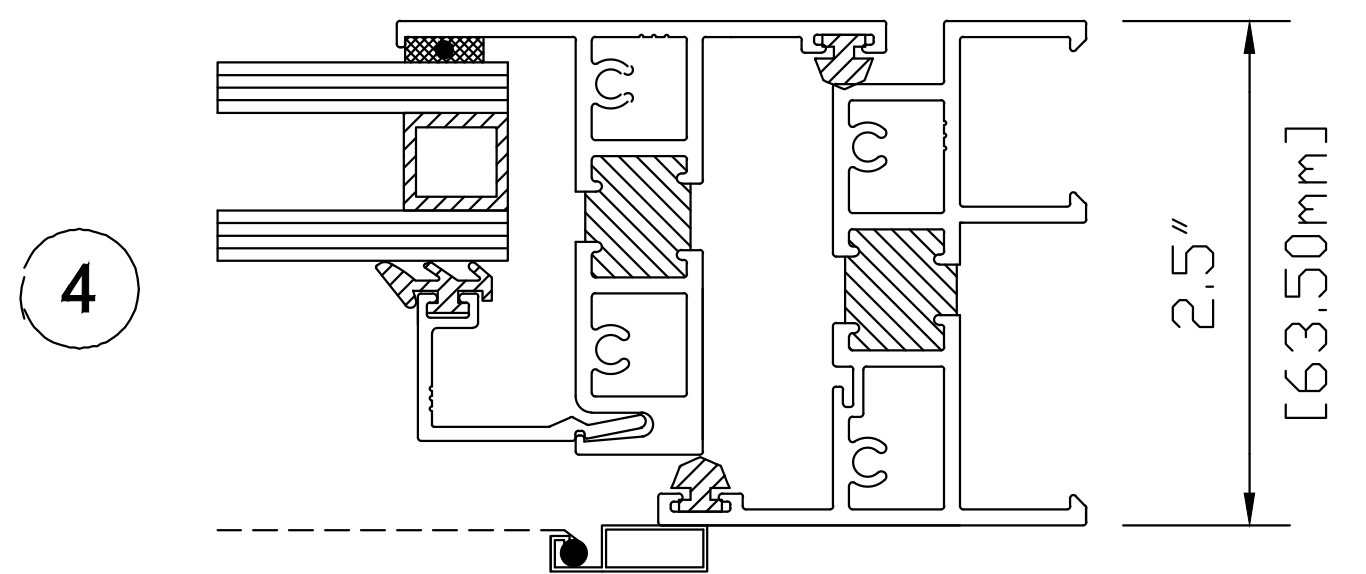
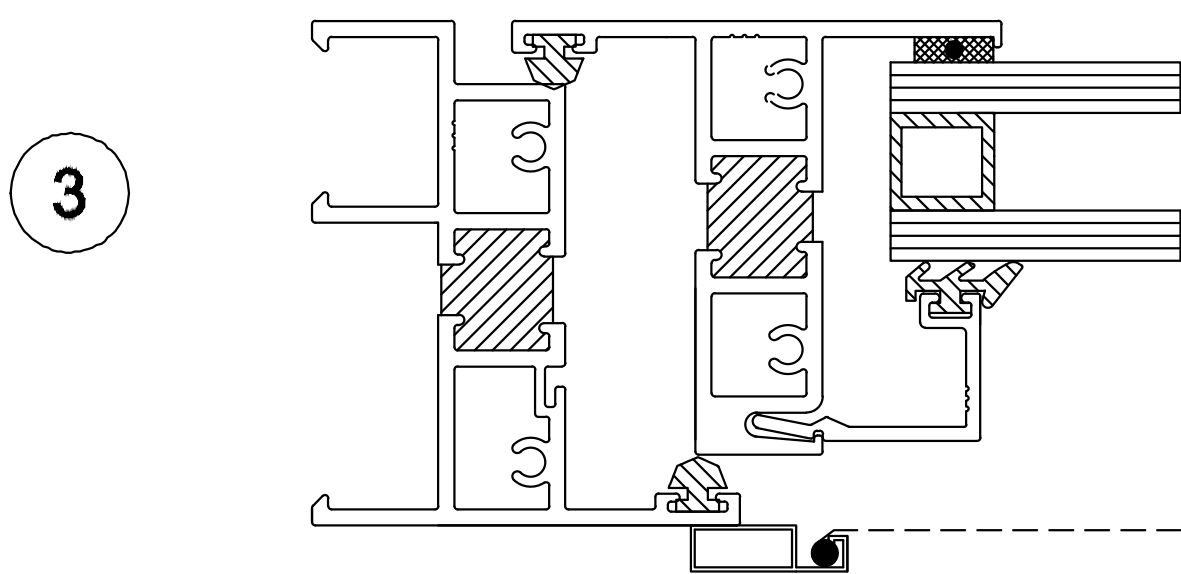
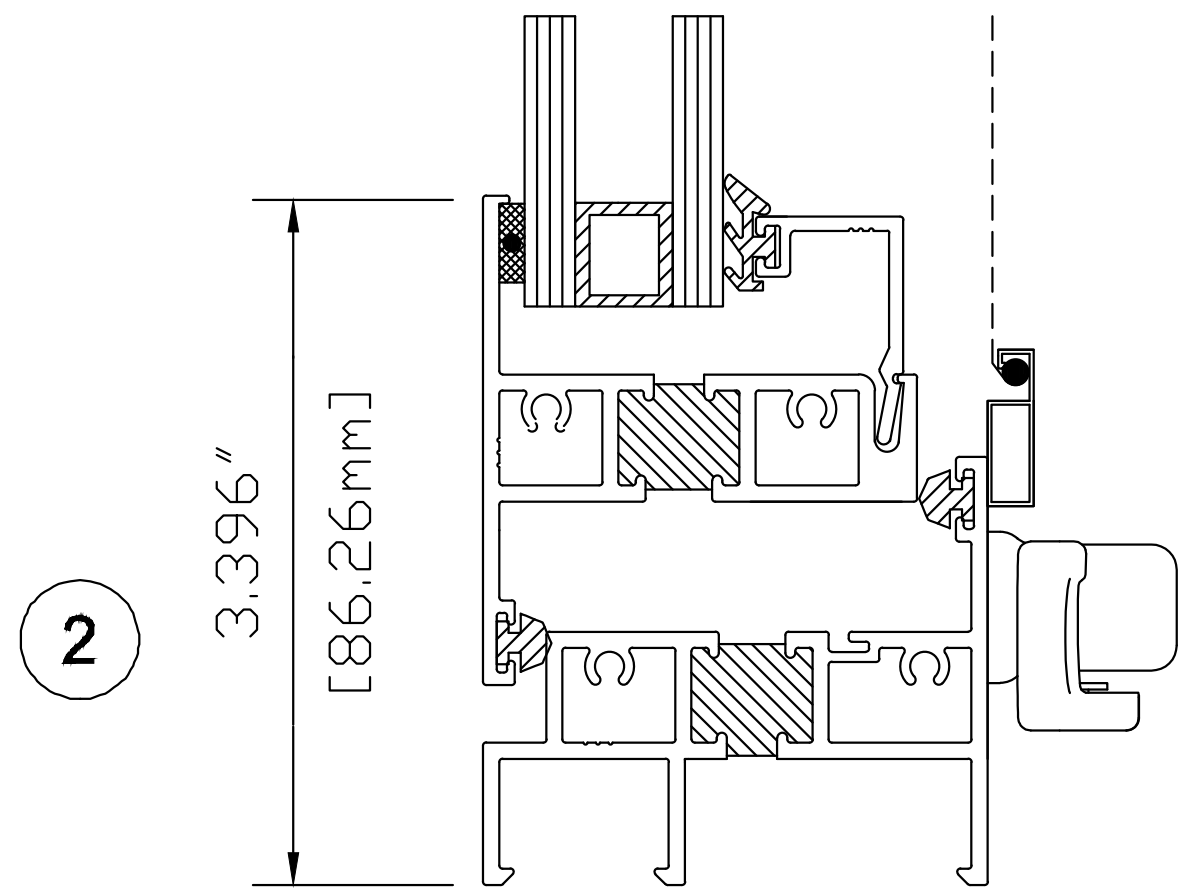
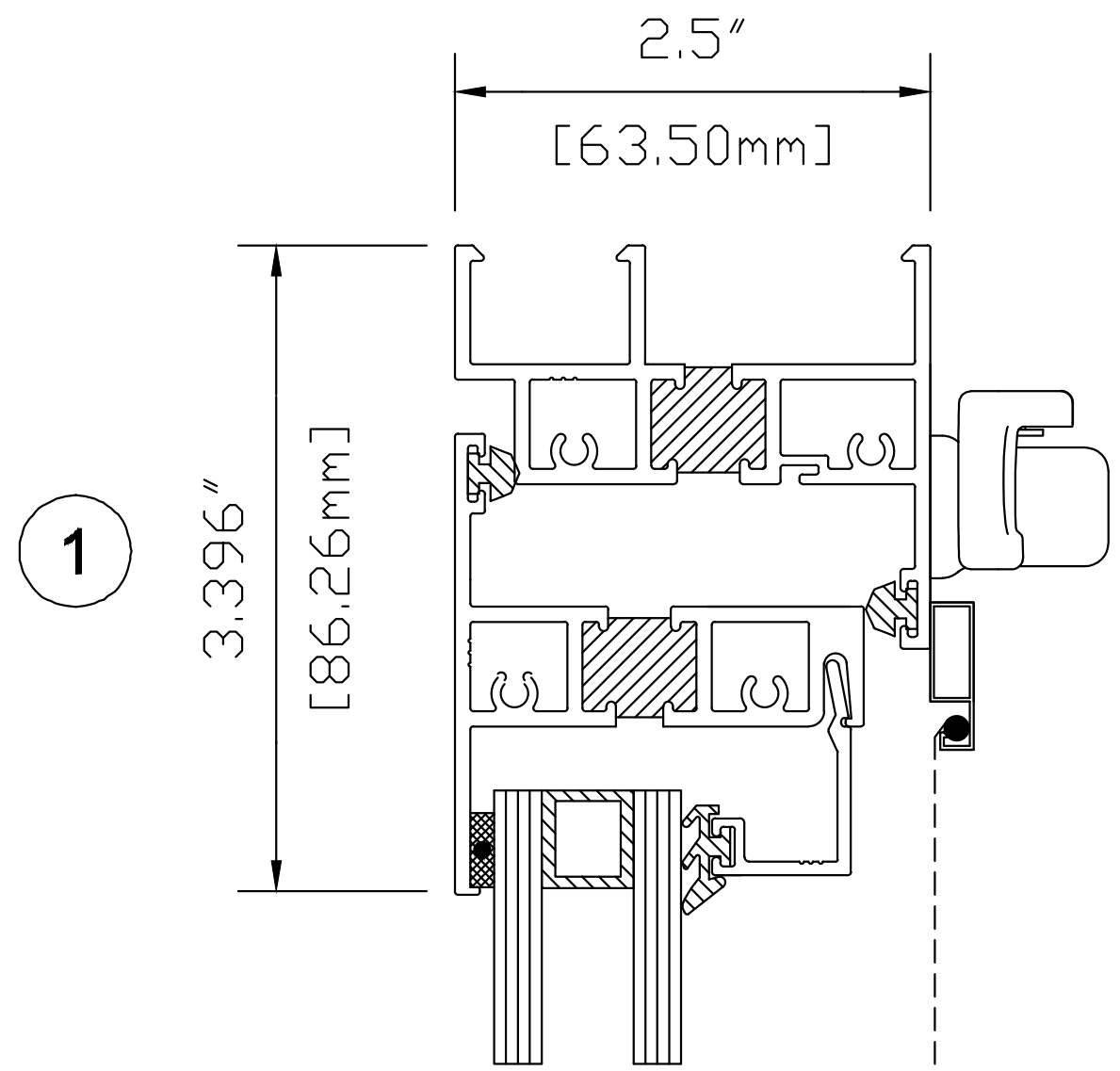
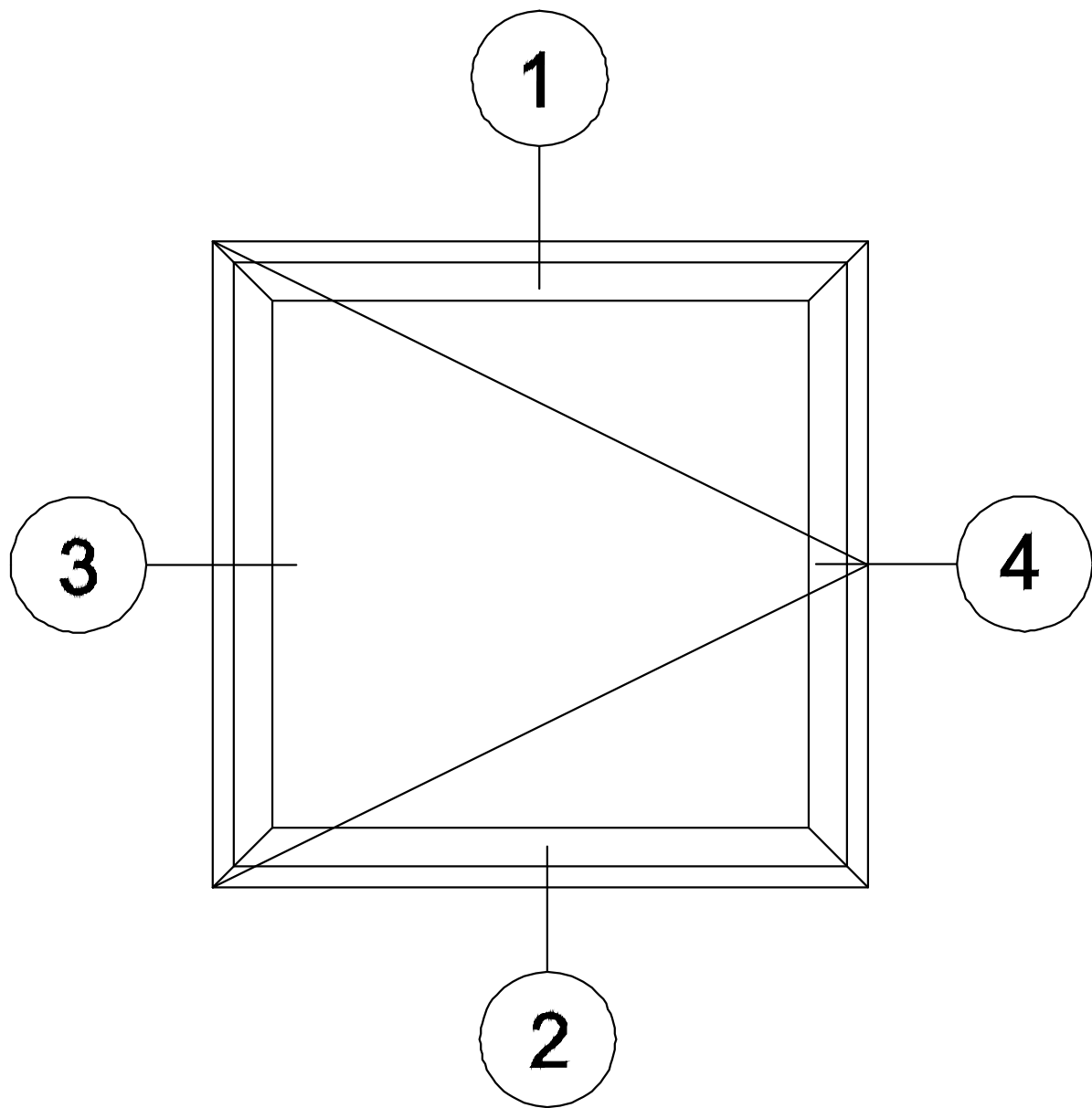
COMMERCIAL DESIGN  
SYSTEMS INC.

DATE: AUGUST 2014  
TEL: (905) 738-0188  
FAX: (905) 738-6132  
E-MAIL: CDS2009@BELLNET.CA

PAGE:

A4

# 1250 SERIES CASEMENT PROJECT OUT



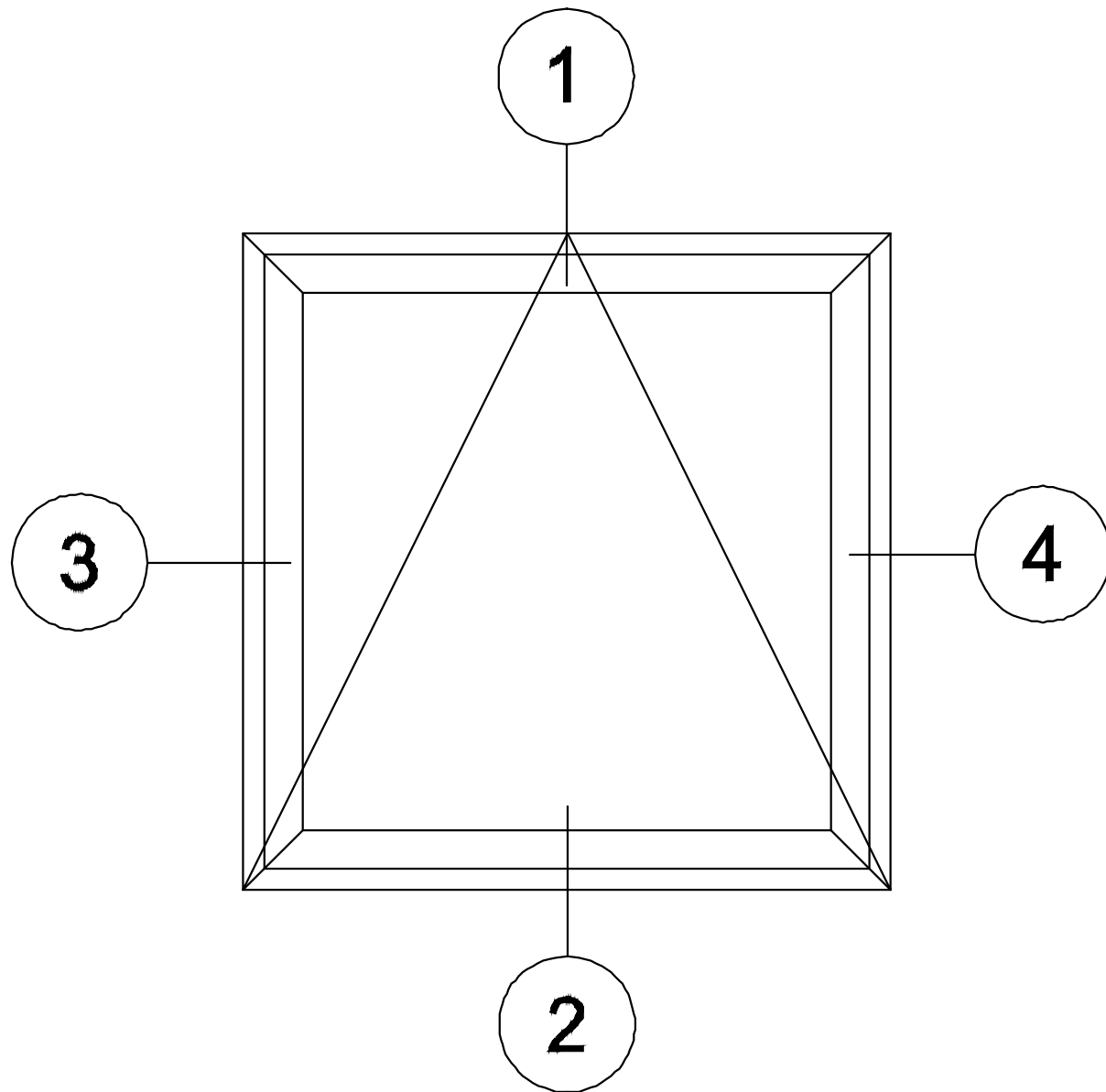
**COMMERCIAL DESIGN  
SYSTEMS INC.**

DATE: AUGUST 2014  
 TEL: (905) 738-0188  
 FAX: (905) 738-6132  
 E-MAIL: CDS2009@BELLNET.CA

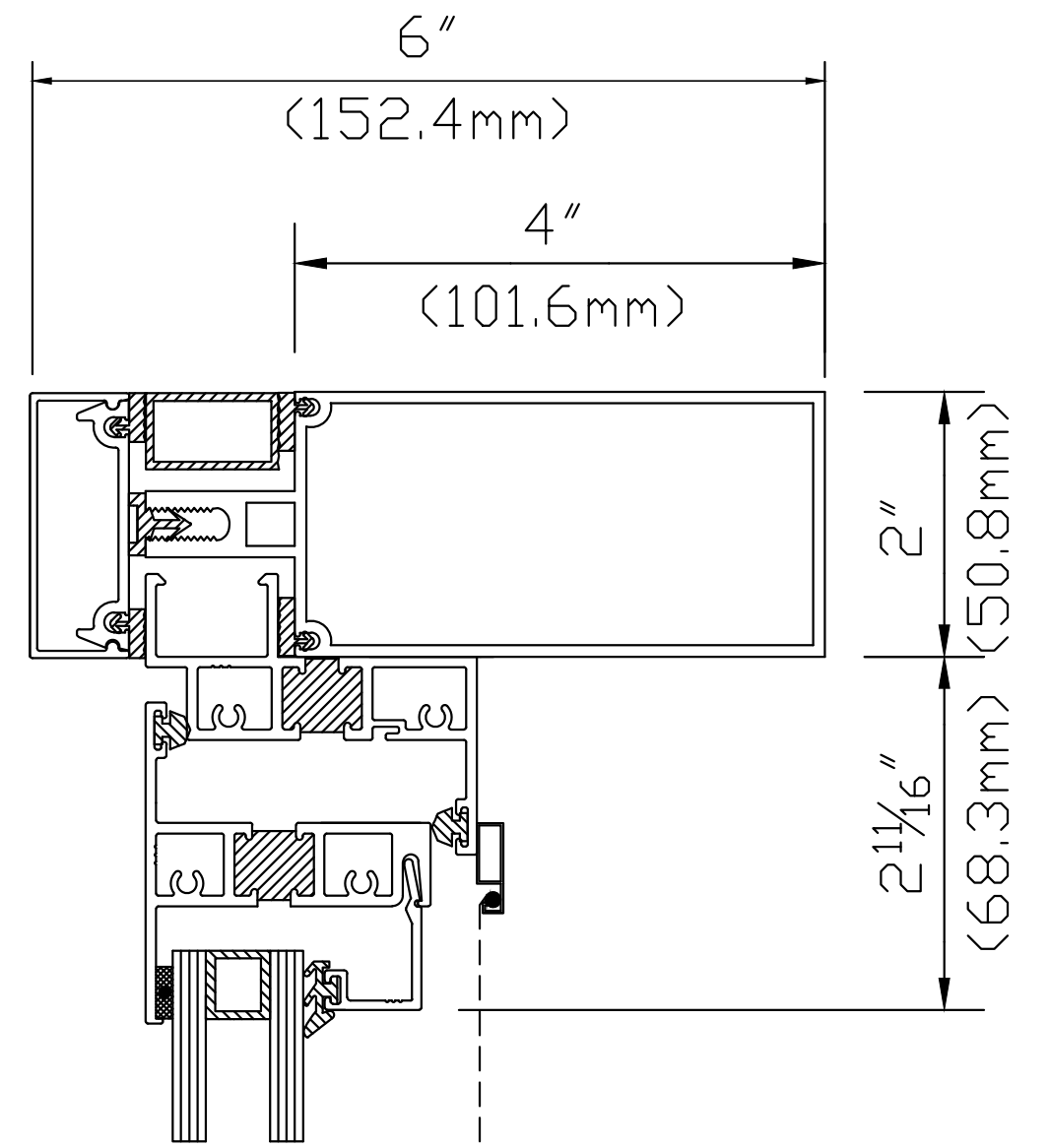
PAGE:

A5

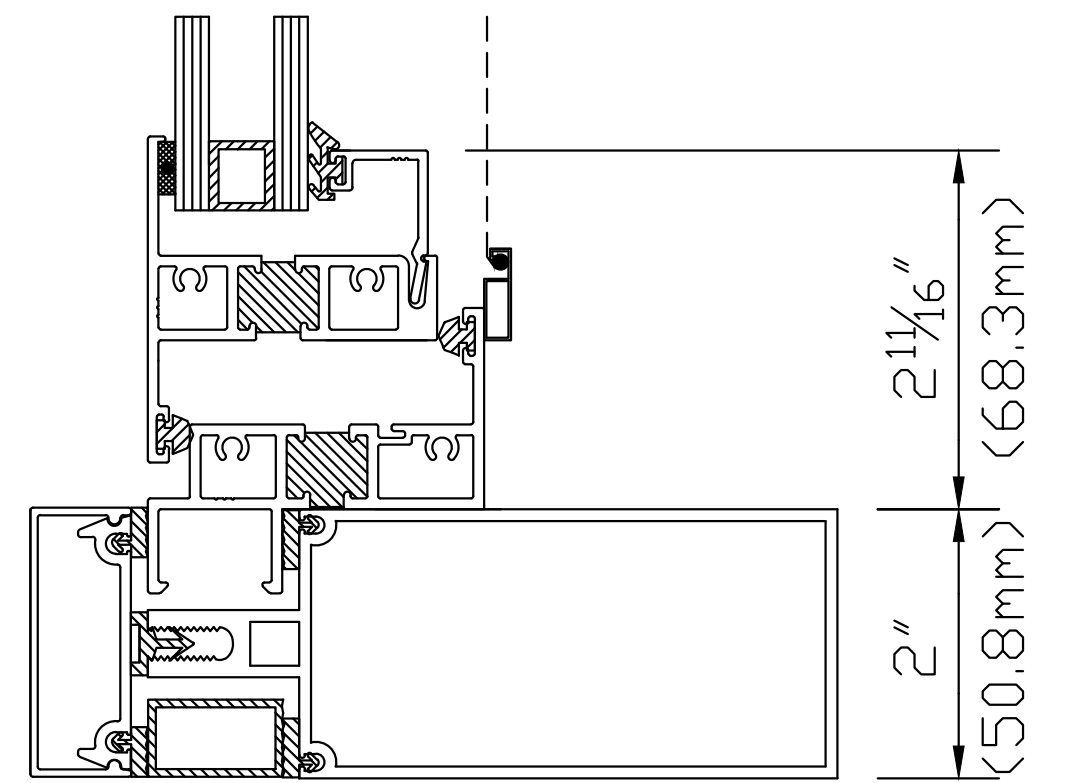
# 1250 SERIES VENT IN 2000 CURTAIN WALL SYSTEM



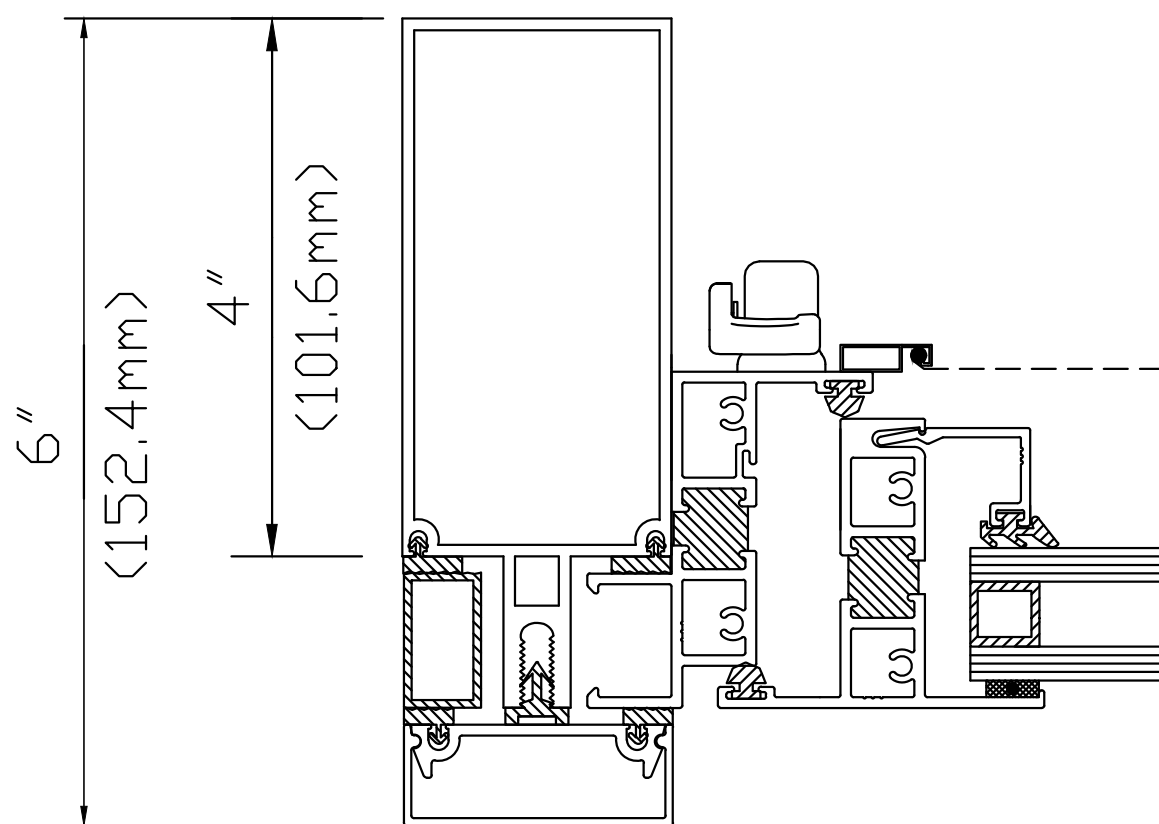
1



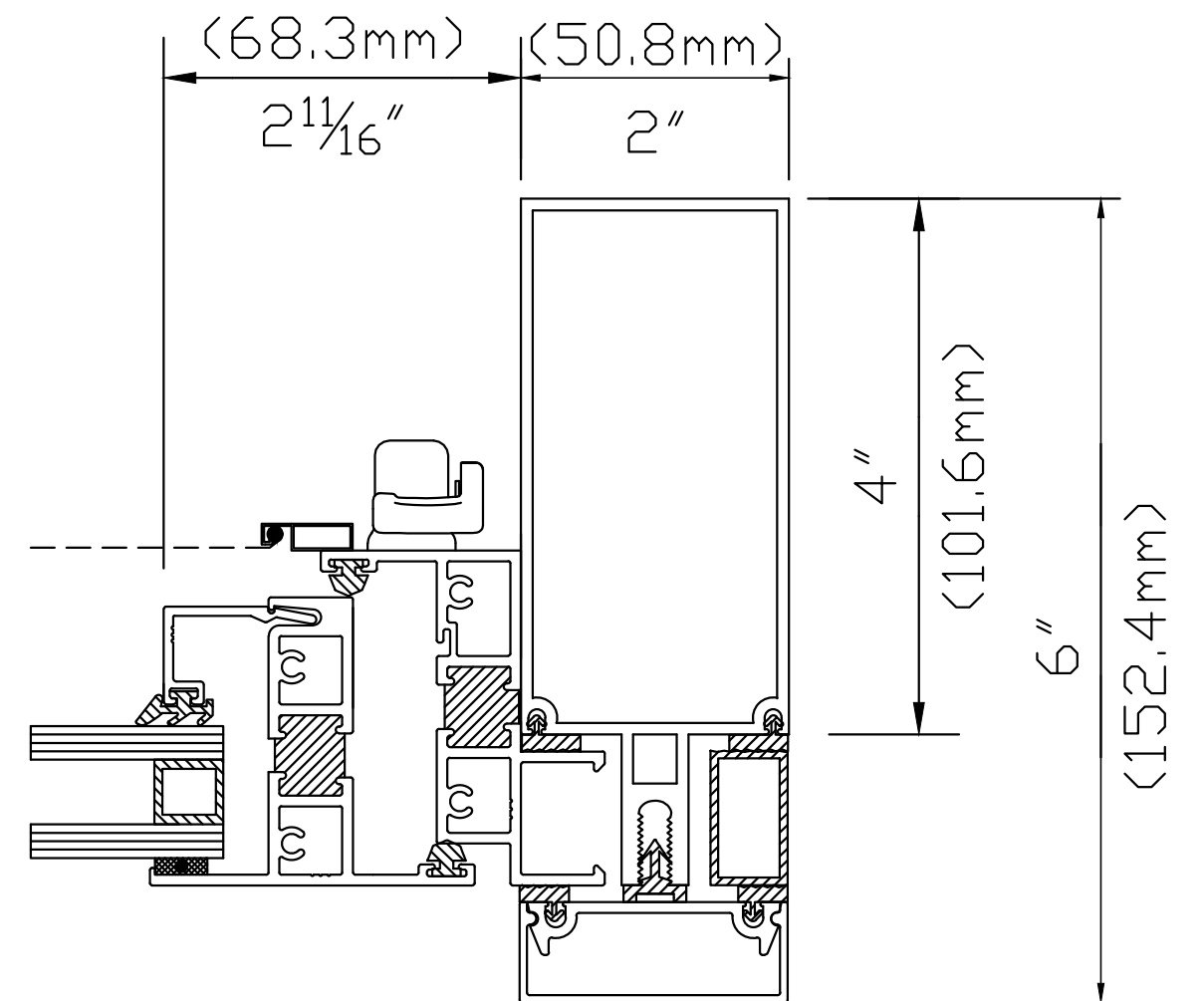
2



3



4



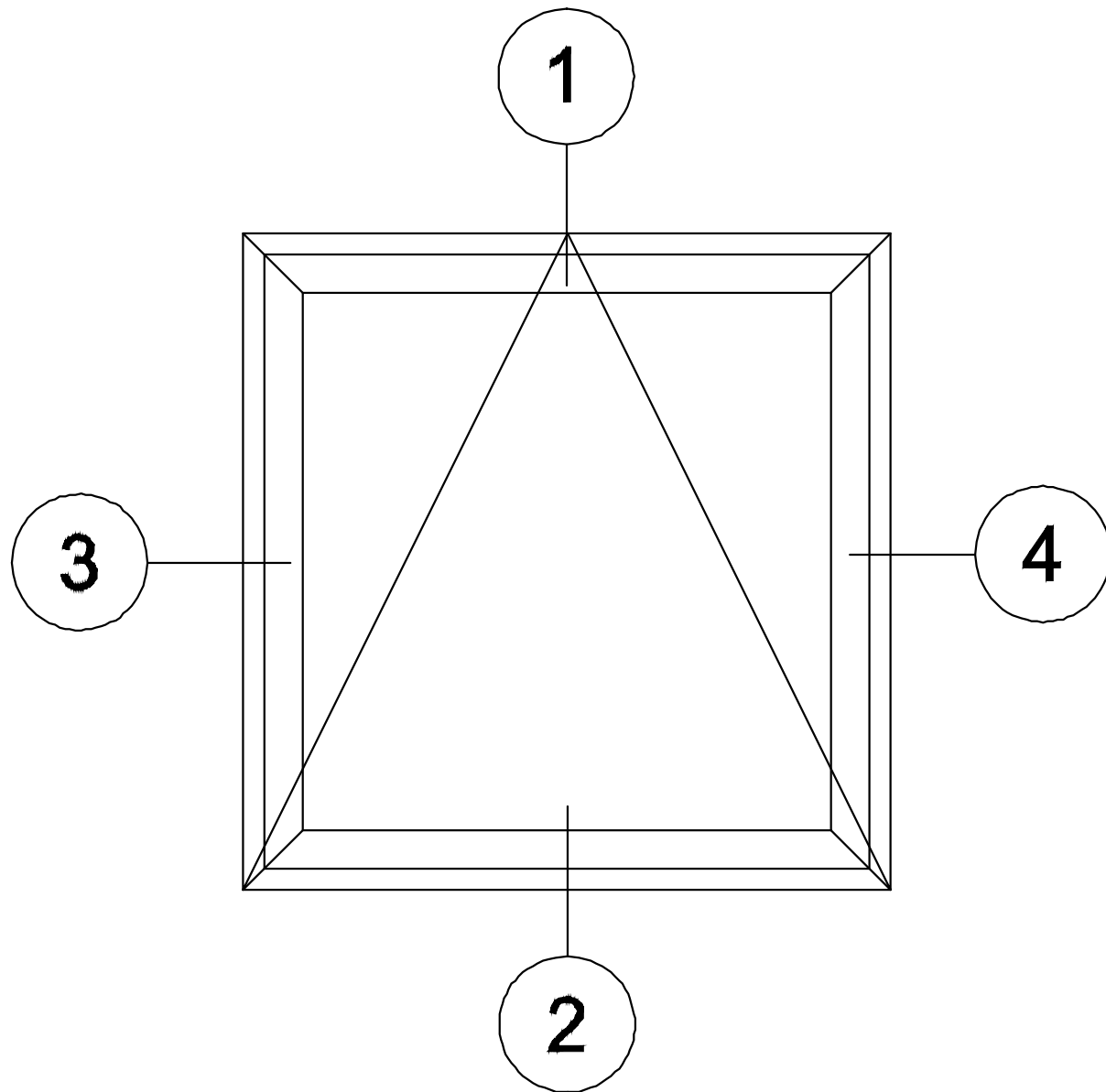
**COMMERCIAL DESIGN  
SYSTEMS INC.**

DATE: AUGUST 2014  
 TEL: (905) 738-0188  
 FAX: (905) 738-6132  
 E-MAIL: CDS2009@BELLNET.CA

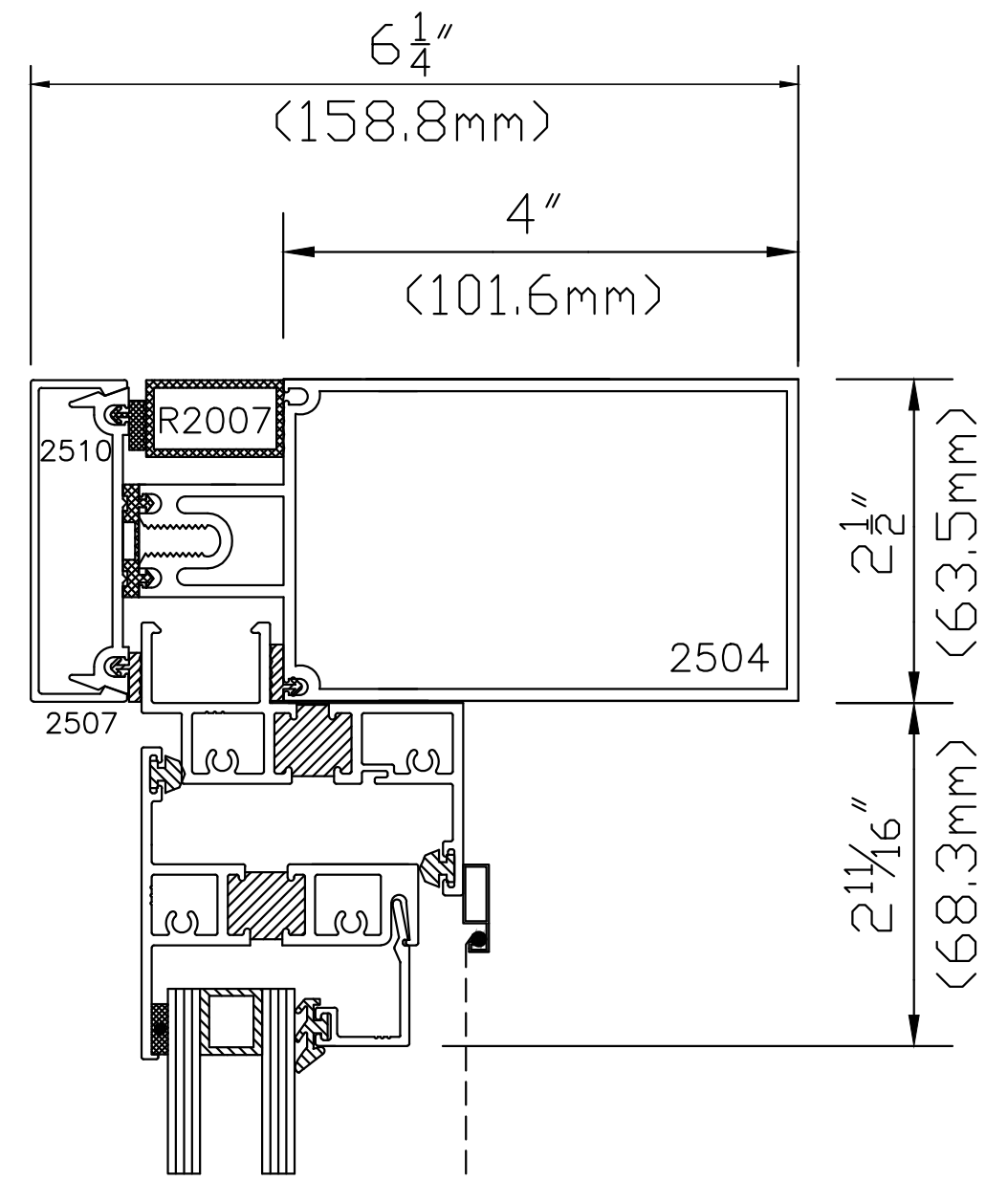
PAGE:

A6

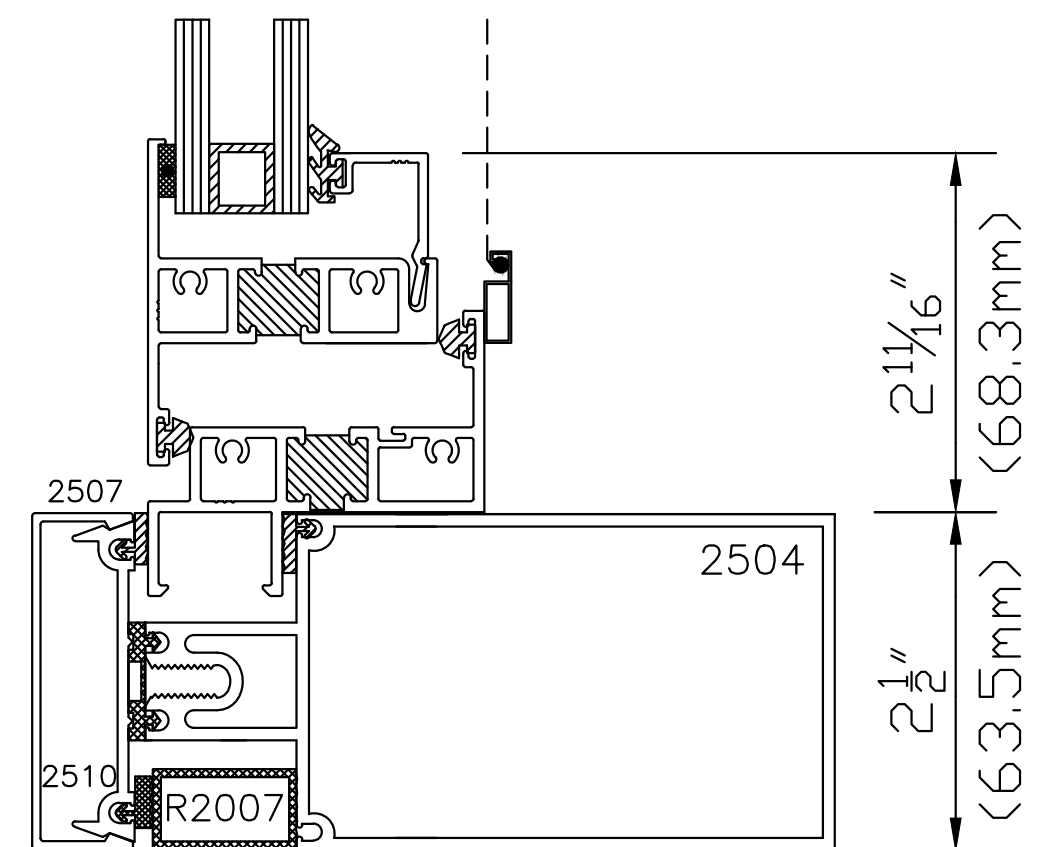
# 1250 SERIES VENT IN 2500 CURTAIN WALL SYSTEM



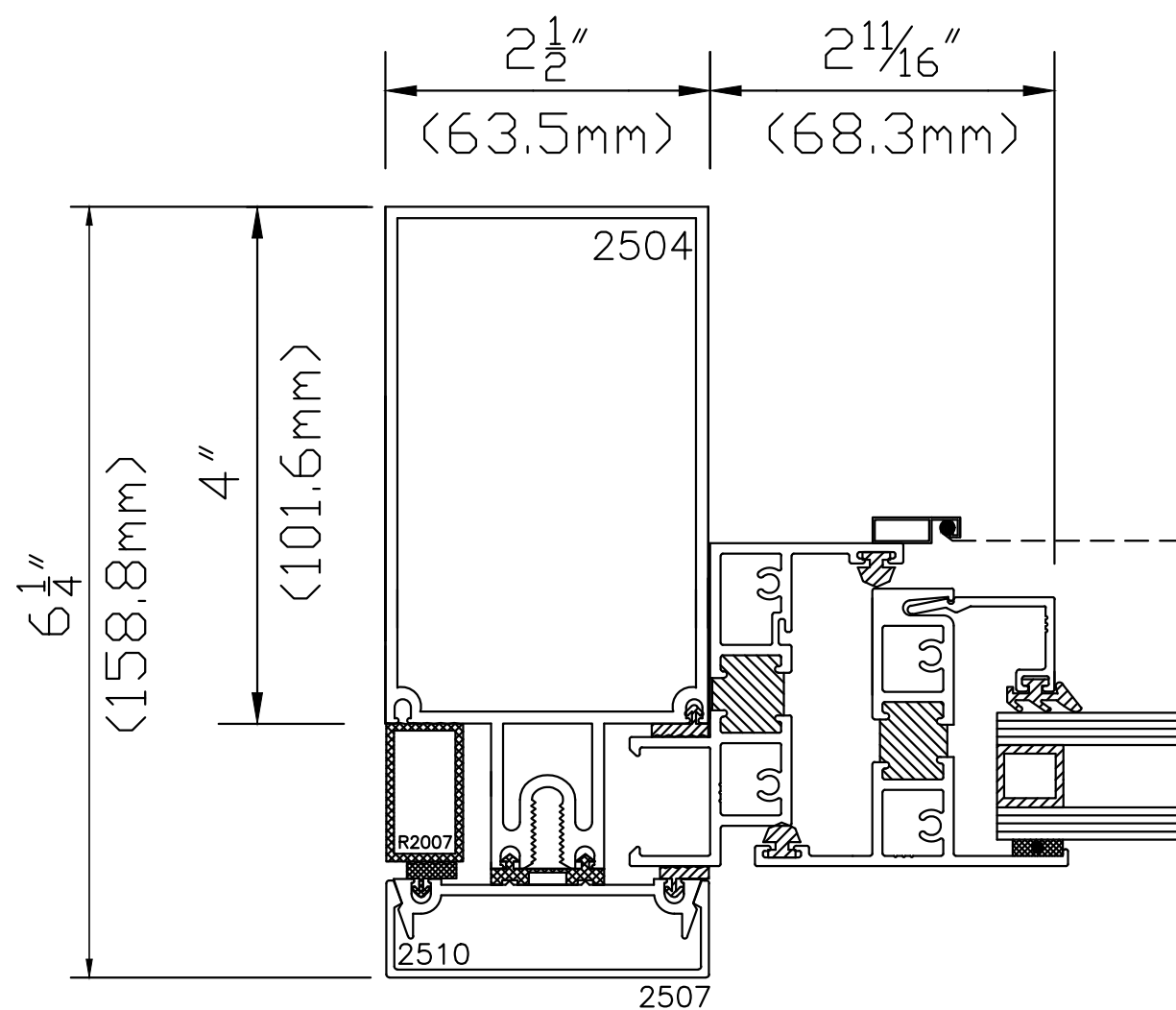
1



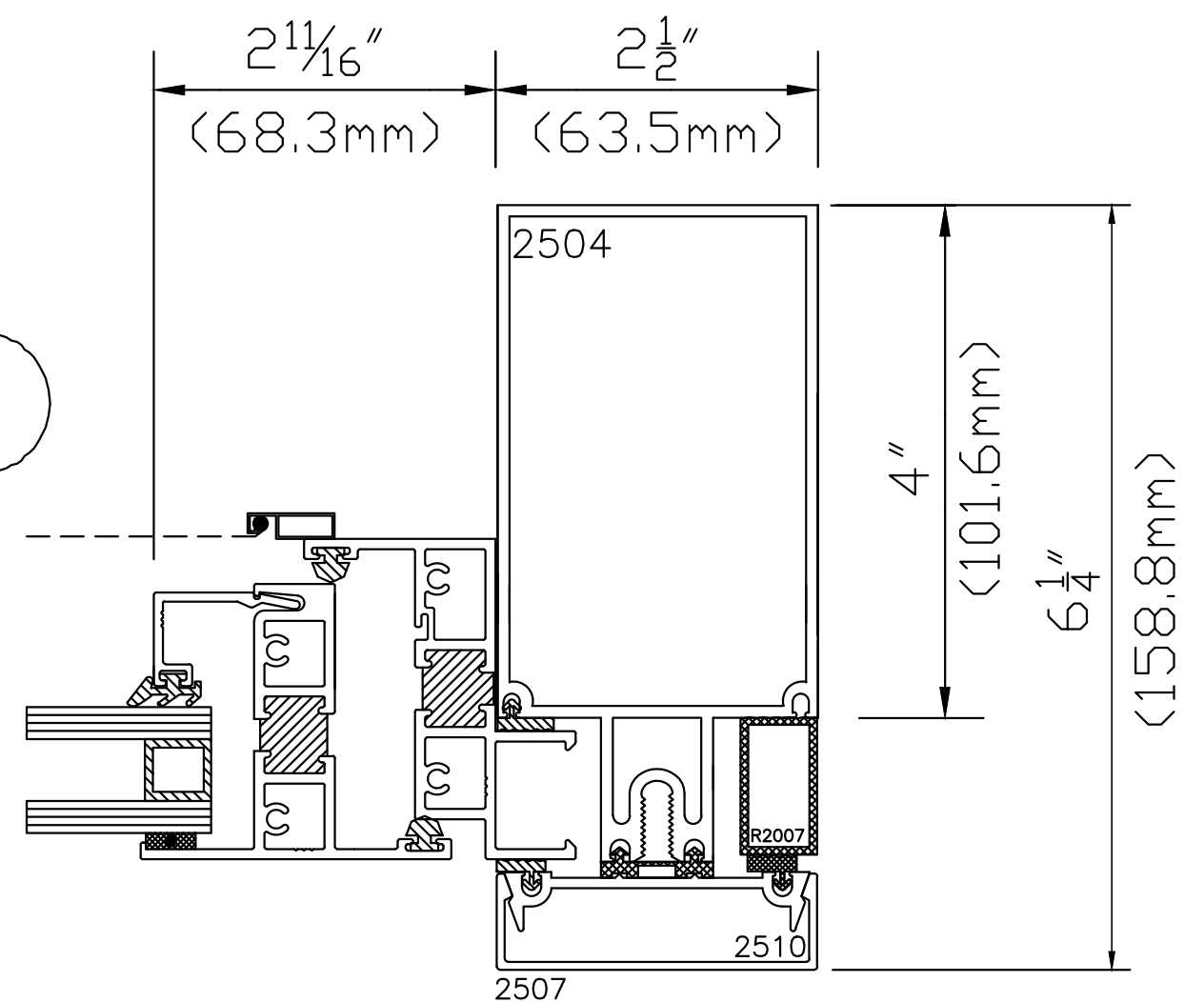
2



3



4



**COMMERCIAL DESIGN  
SYSTEMS INC.**

DATE: AUGUST 2014  
 TEL: (905) 738-0188  
 FAX: (905) 738-6132  
 E-MAIL: CDS2009@BELLNET.CA

PAGE:

A7